

UNIVERSITY OF
WOLLONGONG
AUSTRALIA



PERSONALISED EXPERIENCES : WORLD-CLASS RESULTS

CHOOSE YOUR NEXT ADVENTURE

STUDY ABROAD AND EXCHANGE 2015 / 2016

CONTENTS

1	YOUR DESTINATION
4	MAKE YOURSELF AT HOME

5	YOUR CAMPUS
7	CAMPUS LIFE
9	MAKE THE MOST

11	YOUR PLACE
12	LIVING ON CAMPUS
14	ACCOMMODATION
15	RESIDENCE LOCATIONS

17	YOUR CHOICE
18	STUDY OPTIONS
19	STUDY THEMES
36	CHOOSING YOUR SUBJECTS
37	ADMISSION REQUIREMENTS
38	APPLY NOW

39	GLOBAL PARTNERS
----	------------------------

41	IMPORTANT DATES
----	------------------------



PERSONALISED EXPERIENCES



WE KNOW GREATNESS HAPPENS WHEN YOU CONNECT GREAT MINDS.

With connections to over 200 universities in 35 countries, the University of Wollongong is truly international. We have students of more than 130 nationalities, a nurturing campus culture and a multi-cultural community that helps our international students settle into the Australian lifestyle.

One of the keys to our success is the value we place on our students. Our passionate and approachable teachers, along with our comprehensive student support services, allow you to excel and strengthen your university studies at a university ranked in the top two per cent of the world.

Studying abroad here at the University of Wollongong will give you every opportunity to create truly memorable experiences.

I hope to welcome you to UOW soon.

Professor Joe F Chicharo
Deputy Vice-Chancellor
(Global Strategy)

WORLD-CLASS RESULTS

★ 5-STAR
RATING FOR STUDENT
RETENTION¹

★ 5-STAR
RATING FOR GETTING
A FULL-TIME JOB¹

📊 TOP 2%
OF UNIVERSITIES
IN THE WORLD²

📊 TOP 50
UNIVERSITIES UNDER
50 YEARS OLD³

📊 TOP 100
UNIVERSITIES IN THE
WORLD FOR THE QUALITY
OF OUR GRADUATES⁵

🎓 112,739
GRADUATES WORKING
IN 143 COUNTRIES

📊 95.1%
OF UOW STUDENTS
RECOMMEND UOW⁴

📊 TOP 2%
OF UNIVERSITIES
IN THE WORLD FOR
RESEARCH QUALITY⁶

WOLLONGONG IS A UNIVERSITY CITY

Being Australia's 9th largest city and only an hour from Sydney, Wollongong is a vibrant city that offers the perfect Australian lifestyle. It's affordable, safe, easy to get around and enjoys a lower cost of living than other Australian cities.

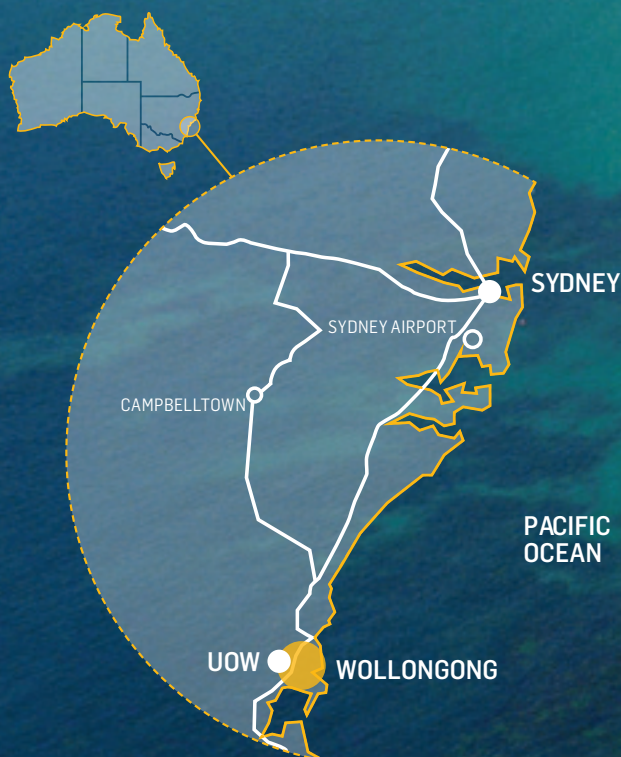
With 17 patrolled surf beaches, a strong sporting community, a rapidly growing music scene and café culture, Wollongong makes being a student easy.

☀️ **27°C**
AVERAGE MAX SUMMER
TEMPERATURE (80.6°F)

🌡️ **22°C**
AVERAGE ANNUAL
TEMPERATURE (71.6°F)

🚶 **4km**
WALK TO NORTHBEACH
(1.5 MILES)

🚗 **83km**
DRIVE TO SYDNEY
(53 MILES)









MAKE YOURSELF AT HOME

Here's some local knowledge to get your Wollongong adventures off on the right foot.



 **17**
PATROLLED
BEACHES

 **20+**
VENUES FOR
LIVE MUSIC

 **15+**
NATURE WALKS IN THE
WOLLONGONG REGION

 **19,125**
JUMPS PER YEAR BY
SKYDIVE THE BEACH

 **28**
TRAINS TO SYDNEY
EVERY DAY BOTH WAYS

THE UOW DIFFERENCE

We've made Study Abroad and Exchange at UOW really simple so that you can enjoy the experience and get the most out of it.

It's all about making study abroad easy.

HANDPICKED SUBJECTS TO SUIT YOUR FIELD OF STUDY

By selecting one of our 14 study themes, you can easily choose from a list of subjects that match your interests. If those themes don't suit you, you can simply pick your own combination of subjects from the wide variety on offer at UOW. (See page 19)

GUARANTEED PLACE IN ONE OF OUR RESIDENCES

You can rest easy knowing that you will have a room waiting for you when you arrive in Wollongong. Housing at UOW is guaranteed if you apply by the deadline. (See page 38)





FREE TRANSPORT ON THE GONG SHUTTLE

Getting around Wollongong is easy and FREE! The Gong Shuttle travels around Wollongong stopping at the UOW campus every 10 minutes connecting halls of residence and UOW to the Wollongong city centre and beaches. (See page 15)



CONNECT WITH A LOCAL STUDENT BEFORE YOU ARRIVE

The UOW Global Buddies Program pairs you with a UOW student prior to your arrival in Wollongong so when you arrive you will have a friendly face waiting to meet you and help you settle in. The UOW Global Buddies club hosts social events throughout the semester—a great opportunity to get to know local UOW students.



WE'RE HERE TO HELP

The Office of Global Student Mobility team are here to assist you from your first enquiry right through to when you return home. You will have one friendly point of contact throughout your study abroad experience. We're here to help you!

EVERYTHING YOU NEED

CAMPUS LIFE

Our Wollongong campus combines modern teaching and study spaces on 83 hectares (205 acres) of landscaped Australian bushland. At UOW you can study in a clean, healthy environment that combines the benefits of an active Australian lifestyle with the resources of an international university.

When you want to work together and make new friends you'll find yourself in a welcoming community filled with people from over 130 countries.

Our campus includes academic support, accommodation, sports, culture and entertainment— everything you need.

 **EAT**
18 FOOD OUTLETS
ON CAMPUS

 **CASH**
2 BANKS &
7 ATMs

 **BUZZ**
7 COFFEE SHOPS
ON CAMPUS

 **SEND**
POST OFFICE

 **FLY**
TRAVEL AGENT

 **DOCTOR**
CAMPUS HEALTH

 **CLIP**
HAIR & BEAUTY
SALON

 **READ**
BOOKSHOP &
NEWSAGENT

 **SNACK**
CAMPUS CONVENIENCE
STORE



DUCKPOND LAWN
A place to meet, study and
listen to live music.



LEARN FROM THE BEST
Be inspired by world class
educators and researchers



UOW LIBRARY
Study, research, collaborate



MAKE THE MOST

During your time at UOW there are endless opportunities to get involved with life on campus. With 100 clubs and societies and 180 live acts on campus each year, it's just a matter of choosing between them.

CLUBS AND SOCIETIES & THE CENTRE FOR STUDENT ENGAGEMENT

unicentre.uow.edu.au/getinvolved | clubs.uow.edu.au

There are over 100 clubs and societies on campus, ranging from social and recreation to religious and cultural groups. Find out about all the student clubs and join online at clubs.uow.edu.au. The Centre for Student Engagement (CSE) runs a number of leadership, training, community engagement and environmental programs designed to give you the chance to learn new things and apply yourself to real world challenges.

UNIBAR

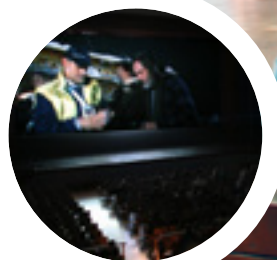
unicentre.uow.edu.au/unibar

The UniBar is the centre of campus entertainment. The smoke-free facility includes a main bar and food service area, quiet lounge and courtyard, outdoor terrace with seating areas, and pool tables. Some of the best local, national and international music is performed every Thursday night during session. The UniBar organises a range of great events to make sure you have fun throughout the year.

UNIMOVIES

unimovies.uow.edu.au

Movies are screened in the Uni Hall every Wednesday night during session. UniMovies is one of the best entertainment bargains, and has a full cinema sized screen and quality Dolby digital surround sound. UniMovies offers the latest releases, plus foreign language and arthouse films throughout the year.





UNISHOP

unishop.uow.edu.au

UniShop hosts the UOW book store, stocking textbooks for all UOW subjects, academic titles and general fiction. The retail section sells stationery, newspapers and magazines (including foreign language publications), UOW memorabilia (e.g. sweatshirts, badges, ties and mugs) and a range of groceries.



SPORT AND RECREATION

urac.com.au

The University Recreation and Aquatic Centre (URAC) is UOW's sports and recreation hub. URAC houses world-class facilities including a fully equipped gym, tennis courts, squash courts, 50-metre heated swimming pool, 3,000-seat multipurpose sports centre, fitness classes, sports fields, basketball courts and more.

URAC organises social and representative team sports competitions plus a range of outdoor activities. With a wide range of sporting, recreational and fitness resources plus 24 different sporting clubs, you're bound to find something you enjoy at URAC!



INTERNATIONAL STUDENT PROGRAMS

uow.edu.au/student/services/ISP

This program provides events and activities for UOW international students, including English conversation groups, friendship programs and sightseeing trips.



LEARNING DEVELOPMENT CENTRE

uow.edu.au/student/services/ld/students

Learning Development offers a range of free resources and teaching services to students who wish to improve their academic performance. The Centre offers workshops, individual consultations and access to self-directed resources.

YOUR PLACE

YOUR PLACE TO LIVE

LIVING ON CAMPUS

At UOW Living you will benefit from a multicultural environment of high academic achievement, involvement and personal development. Our accommodation gives you the choice of catered, flexi-catered or self-catered, all in community-based environments.

All residences are conveniently located, with some only a quick walk from the main campus, and others a short trip on the free shuttle bus.

DEVON BURTON
Vassar College, New York USA
🏠 International House



"...NOW I'VE ALSO MET PEOPLE FROM ALL OVER
THE WORLD... I COULDN'T HAVE ASKED FOR MORE...
SHARING OUR CULTURES, HOPES, FEARS, FUN
AND PASSIONS."

As Devon's friends from her floor in International House drop by her room, you'd never guess she's only been here for 9 months.

"I had hoped International House would help me meet Australians and now I've also met people from all over the world. I couldn't have asked for more. I'm living with students from the Americas, Singapore, Brazil, Kenya, Hong Kong and Jamaica. We're all together in one place sharing our cultures, hopes, fears, fun and passions.

"I was excited to come to UOW but as soon as my flight landed, I felt homesick. Knowing I would be away from my family and friends was daunting. I hoped that I'd meet new people, and as soon as I arrived everyone was super friendly, everyone came up to me to say hi and we became a family. It sounds corny but it really is like that.

"All it took was a deep breath and a step out my door to make friends I will have for life."



LOCATION MAP
ON PAGE 15

	1	2	3	4
				
	INTERNATIONAL HOUSE Catered	WEERONA Catered	CAMPUS EAST Flexi catered/ Self catered	KOOLOOBONG VILLAGE Self catered
	A vibrant community of domestic and international students	Highly supportive community	Closest to the beach	The only residence located on the grounds of Wollongong Campus
WEEKLY FEES	\$268	\$268	\$243	\$189
NUMBER OF BEDS	222	204	616	553
SINGLE ROOMS	✓	✓	✓	✓
SHARED ROOMS	✓	✓		
BATHROOMS	SHARED	SHARED	SHARED	SHARED
CLEANING OF ROOMS	✓	✓	✓	
COMPUTER LAB FACILITIES	✓	✓	✓	✓
UNDERGRADUATE ACCOMMODATION	✓	✓	✓	✓
POSTGRADUATE ACCOMMODATION			✓	✓
MEAL SERVICE (19 PER WEEK)	✓	✓	✓	
FREE SHUTTLE BUS NEARBY	✓	✓	✓	✓
5/10 MIN WALK TO TRAIN STATION	✓	✓	✓	
CLOSE TO POPULAR BEACHES			✓	
CLOSE TO SHOPS AND CAFES		✓	✓	✓

All residences feature student development and peer mentor programs, social, sporting and cultural events, and 24/7 student wellbeing care. Utilities, furniture, laundry, car parking and environmentally responsible recycling programs are available at each residence.

ACCOMMODATION OPTIONS

 <div>5</div>	 <div>6</div>	 <div>7</div>	 <div>8</div>	 <div>9</div>
KEIRAVIEW Self catered	MARKETVIEW Self catered	THE MANOR Catered Postgrad only	GUNDI Self catered Postgrad only	GRADUATE HOUSE Self catered Postgrad only
Close to popular cafes and restaurants, with motel style rooms	Close to popular cafes and restaurants, with motel style rooms	Has access to all services at International House	Close to popular beaches, cafes and restaurants	Just across the street from UOW, designed for couples and families
\$234	\$248	\$225	\$194	\$216
46	144	9	34	78 units
✓	✓	✓	✓	✓
PRIVATE	PRIVATE	SHARED	SHARED	PRIVATE
✓	✓	✓		
✓				
✓	✓			
✓	✓	✓	✓	✓
✓	✓	✓	✓	✓
	✓	✓	✓	
✓	✓		✓	
✓	✓		✓	✓



Key

- FREE** Route 55
Gong Shuttle
- FREE** Route 9
North Gong Shuttle
- FREE**
Gwynneville -
Keiraville Shuttle

RESIDENCE LOCATIONS

1 **INTERNATIONAL HOUSE**
Cnr Porter Street & Hindmarsh
Avenue, North Wollongong

2 **WEERONA**
Cnr Throsby Drive & Foley Street,
Gwynneville

3 **CAMPUS EAST**
Cowper Street, North Wollongong

4 **KOOLOOBONG VILLAGE**
Northfields Avenue, Gwynneville

5 **KEIRAVIEW**
75 - 79 Keira Street, Wollongong

6 **MARKETVIEW**
Cnr Church & Market Streets,
Wollongong

7 **THE MANOR**
22 Porter Street, Gwynneville

8 **GUNDI**
11 Gipps Street, Wollongong

9 **GRADUATE HOUSE**
Madoline Street, Gwynneville



UOW offers a guaranteed place in UOW accommodation to study abroad students.

Conditions apply—for details, see uow.edu.au/about/accommodation/guarantee



STUDY OPTIONS

UOW STUDY AREAS

UOW offers subjects in a wide range of study areas. Study Abroad and Exchange students are welcome to choose any combination of subjects. The Study Themes covered on pages 19-34 give further detail on study areas that are of particular interest to study abroad students. If there is not a study theme that covers your area of interest you can pick your own combination of subjects from the Subject Descriptions link on the Course Handbook website uow.edu.au/handbook

ARTS & INTERNATIONAL STUDIES

- Asia Pacific Studies
- Australian Studies
- Cultural Studies
- English Literature
- History
- Indigenous Studies
- International Studies
- Languages (French, Italian, Japanese, Mandarin, Spanish)
- Philosophy
- Politics
- Postcolonial Studies
- Science & Technology Studies
- Sociology

BUSINESS

- Accountancy
- Accounting and Financial Services
- Banking and Financial Services
- Business
- Business Innovation
- Business Law
- Electronic Commerce
- Economics
- Events Management
- Finance
- Financial Planning
- Forensic Accounting
- Hospitality Management
- Human Resource
- International Business
- International Economics
- Human Resource Management
- Management
- Marketing
- Marketing & Social Research
- Organisational Innovation
- Public Relations
- Quantitative Analysis in Economics
- Regional Development
- Strategic Management and Marketing
- Strategic Marketing
- Supply Chain Management
- Tourism Management

CREATIVE ARTS

- Creative Writing
- Media Arts
- Graphic Design
- Music
- Performance
- Theatre
- Visual Arts

EDUCATION

- Early Years Education
- Mathematics Education
- Physical & Health Education
- Science Education
- Primary Education

ENGINEERING

- Asset Management
- Civil
- Computer
- Electrical
- Engineering Logistics
- Engineering Management
- Environmental
- Manufacturing
- Materials
- Mechanical
- Mechatronic
- Mining
- Rail
- Telecommunications

HEALTH AND MEDICINE

- Biomedical Science
- Community Health
- Dementia
- Epidemiology
- Exercise Rehabilitation
- Exercise Science
- Gerontology & Rehabilitation
- Health Administration
- Health Management/Policy
- Health Promotion
- Health Research
- Health Sciences
- Indigenous Health
- Medical Science
- Medicine
- Mental Health
- Midwifery
- Nursing
- Nutrition & Dietetics
- Occupational Health & Safety
- Occupational Hygiene Practise
- Public Health

INFORMATION & COMMUNICATION TECHNOLOGY

- Business Information Systems
- Computer Science
- Digital Systems Security
- E-business
- Enterprise Systems Development
- Enterprise Networking
- Health Informatics
- Information & Communication Technology
- Information Systems
- Information Security
- Intelligent Systems
- Mobile Computing
- Multimedia & Game Development
- Multimedia Information Processing
- Network Design and Management
- Social Policy
- Software Engineering
- Web Design & Development

LAW

- Undergraduate Law
- Graduate Law
- Fisheries Policy
- Maritime Studies
- Prosecutions/Defence

MATHEMATICS & STATISTICS

- Applied Statistics
- Mathematics
- Mathematics and Finance
- Mathematics Education
- Medical Mathematics

MEDIA, COMMUNICATIONS & JOURNALISM

- Communications & Media Studies
- Journalism

PHYSICS

- Physics
- Medical and Radiation Physics
- Nuclear Science & Technology

PSYCHOLOGY

- Psychology
- Clinical Psychology

SCIENCE

- Biological Sciences
- Biotechnology
- Coastal Planning and Management
- Chemistry
- Conservation Biology
- Environmental Biology
- Environmental Science
- Geology
- Geosciences
- Human Geography
- Physical Geography
- Land & Heritage Management
- Marine Science
- Medical Biotechnology
- Medicinal Chemistry
- Nanotechnology
- International Science
- Science and Management

SYDNEY BUSINESS SCHOOL

- Accounting
- Business Coaching
- International Business
- Logistics
- Management
- MBA
- Project Management
- Retail Management



STUDY THEMES

Study Abroad and Exchange students can select a study program of one or two sessions from any of the academic disciplines at the University of Wollongong (UOW). Study packages covering various academic themes have been developed to assist with your planning. Some themes provide opportunities to incorporate volunteering, service learning or an internship, adding an extra dimension to your semester abroad.

1	AUSTRALIAN AND INDIGENOUS STUDIES / 21
2	CREATIVE WRITING / 22
3	DIGITAL ARTS AND CREATIVE ARTS / 23
4	ENGINEERING / 24
5	INFORMATION SYSTEMS AND SOFTWARE ENGINEERING / 25
6	INTERNATIONAL BUSINESS & RELATIONS / 26
7	LANDSCAPE, ENVIRONMENT AND ECOLOGY OF AUSTRALIA / 27
8	LAW / 28
9	MEDIA CULTURE AND COMMUNICATIONS / 29
10	MEDICAL AND HEALTH SCIENCES / 30
11	PSYCHOLOGY / 31
12	PUBLIC HEALTH AND INDIGENOUS HEALTH / 32
13	SOCIAL INNOVATION AND ENTREPRENEURSHIP / 33
14	SUSTAINABILITY STUDIES / 34

AUSTRALIAN AND INDIGENOUS STUDIES

The Australian and Indigenous Studies theme provides a range of subject options to increase students' understanding of contemporary cultural, environmental and social issues in Australia.

This is an interdisciplinary field that helps equip students to think reflexively about issues that impact on Indigenous communities on a local, national and global scale. It offers a rich insight into the complexities and contradictions that contribute to the notions of 'Australia' and 'Australian' and includes Indigenous studies, history, politics, literature, media, sociology and science and technology studies.

Subject code	Subject name	Prerequisite knowledge
Autumn session (February—July)		
AUST101	Australian Studies: Cultures & Identities	None
ECON304	The Historical Foundations of the Modern Australian Economy	72cp including ECON101 & ECON111
HIST203	Australians and the Great War	36cp including 6cp HIST, POL, AUST, ARTS, CENV or INTS
HIST350	Debates in Australian Cultural History	24cp at 200 level
INDS150	Introduction to Indigenous Australia	None
INDS201	Redefining Eden: Indigenous Peoples & the Environment	36cp
INDS203	Critical Themes in Indigenous Studies	INDS150 or INDS130, plus 30 cp at 100 level
CAVA123	Australian Aboriginal Arts	None
Spring Session (July—November)		
AUST102	Locating Australia	None
ENGL131	Film and Fiction	None
INDS130	Indigenous Knowledges In Global Perspective	None
INDS202	Indigenous Self Representation in Contemporary Contexts	36cp Incl either ABST150, INDS150, SMAC100 or 6cp in any of ENGL, CREA OR CCS
HIST239	Water in Australia: An Environmental History	36cp at 100 level
SHS 331	Social Determinates of Indigenous Health	24cp at 200 level

cp = Credit Points

CREATIVE WRITING

The Creative Writing theme offers a wide array of subjects in poetry, prose fiction, scripting (film and theatre) as well as editing and writing theory.

In general, class activities are based around a combination of lectures, intensive workshops, writing exercises, group discussions and individual student presentations. Students are encouraged to participate in public readings and performance of their work, as well as the active pursuit of publication.

Subject code	Subject name	Prerequisite knowledge
Autumn session (February—July)		
CACW100	Introduction To Creative Writing	None
CACW101	Writing Foundation: Poetic, Dramatic, Narrative	None
CACW103	Editing Foundation	None
CACW201	Poetic Studio	Pre-approval required
CACW202	Dramatic Studio	Pre-approval required
CACW231	Writing, Representation and Power	Pre-approval required, CACS101 and CACS102
CACW301	Writing Across Borders	Pre-approval required, 24 cp of CACW or WRIT @ 200
CACW331	Contemporary Theory and the Practising Writer	
Spring Session (July—November)		
CACW100	Introduction To Creative Writing	None
CACW102	Writing Foundation: Literary Crossovers	None
CACW104	Texts And Context	None
CACW203	Narrative Studio	Pre-approval required
CACW232	Writing and Critical Theory	Pre-approval required, CACS101 and CACS102
CACW302	Advanced Editing for Publication	Pre-approval required, CACW103
CACW390	Creative Writing Major Project	Pre-approval required, CACW301

cp = Credit Points

DIGITAL ARTS AND CREATIVE ARTS

The Digital Arts and Creative Arts theme draws together a variety of subjects relevant to students with an interest in the contemporary arts and the rapidly growing digital media industry.

The subjects are drawn from the art and design programs and they combine both theory and practical work to give students an introduction to such diverse areas as graphic design, photography, multimedia arts, visual art, sound, drama and music history, and Aboriginal art and culture.

The new Centre for Digital Media at UOW's Innovation Campus works closely with industry partners and complements the research and facilities in the Faculty of Law, Humanities and the Arts. The Faculty's studios, laboratories, performance spaces and galleries provide an inspiring work environment for showcasing the work of students as well as hosting Australian and international exhibitions and performances. In addition, the Faculty's staff are accomplished nationally and internationally respected practitioners in their area.

Subject code	Subject name	Prerequisite knowledge
Autumn session (February—July)		
MEDA101	Introduction to Media Arts	None
MEDA201	Time, Space and Data	MEDA101 or MEDA102
CAPF101	Performance Skills 1: Acting, Movement, Singing, Voice	None
CAPF111	Stagecraft 1	Pre-approval required
CAVA101	Visual Foundation 1	None
CAVA102	Visual Foundation 2	None
CAVA124	Introduction to Photography	None
CAVA111	Visual Arts Studio Workshop A	None
Spring Session (July—November)		
CSCI236	3D Modelling and Animation	12cp of 200 level CSCI
DESN190	Design Principles	None
MEDA102	Computational Media	None
MEDA 202	System, Play and Interaction	MEDA102
CAPF102	Performance Skills 2: Acting, Movement, Singing and Voice	CAPF101
CAPF112	Stagecraft 2	None
CAVA103	Visual Foundation 3	CAVA101 and CAVA102
CAVA104	Visual Foundation 4: Studio Practice	CAVA101 and CAVA102
CAVA112	Visual Arts Studio Workshop B	Pre-approval required

cp = Credit Points

ENGINEERING

Engineering has a long and successful history in Wollongong. UOW Engineering schools are recognised within the top Australian Engineering schools as a member of the Group of Eight Deans of Engineering and Associates (Go8).

UOW Engineering enjoys an established international reputation for research excellence in areas such as materials engineering, structural engineering, geomechanics, mining, robotics and mechatronics, physics, and environmental engineering. Students benefit from direct access to professors who play a pivotal role in the latest research alongside leading government and industry professionals.

Students have opportunities to work in well-designed laboratories and workshops, which are essential to the development of engineering skills. Students are able to participate in the annual Australasian Formula SAE competition, where student teams design, build and race their own car. In 2013, Team UOW flew to China to be the first Australian team to participate in the Solar Decathlon, and placed first among the world's most innovative sustainable house designs. These competitions are a great opportunity for students to develop valuable project management skills.

Subject code	Subject name	Prerequisite knowledge
Autumn session (February—July)		
ENGG251	Mechanics of Solids	ENGG152
ENVE377	Membrane Science and Technology	ENVE220
ENGG252	Engineering Fluid Mechanics	MATH142, MATH188 or MATH162
ENGG461	Managing Engineering Projects	At least 96cp
MATE301	Engineering Alloys	MATE203
MATE306	Fracture, Failure and Degradation	MATE202
MECH341	Thermodynamics	MECH252
PHYS305	Quantum Mechanics	PHYS205 or PHYS230
MINE416	Mining Valuation	MINE220 and MINE311
Spring Session (July—November)		
ENGG154	Innovation & Design	None
ENVE220	Water Quality and Ecological Engineering	ENGG252
ENVE221	Air & Noise Pollution Control Engineering	ENGG252
CIVL272	Surveying	None
MECH201	Engineering Analysis	MATH142
ENGG378	Sustainable Energy Technologies	ENGG252, MECH440 or MECH340
PHYS375	Nuclear Physics	PHYS305

cp = Credit Points

INFORMATION SYSTEMS AND SOFTWARE ENGINEERING

The Information Systems and Software Engineering theme provides students with an understanding of the rapidly changing IT environment and importance of IT in the digital economy.

Subjects are taught through the School of Information Systems and Technology, and School of Computer Science and Software Engineering, alongside one of Australia's leading teaching and research centres for building, deploying and managing the latest computing technologies and business information systems. Students also learn about the role of software engineering arrayed with a broad range of methodological approaches for building programs for enterprise systems. Subjects in this theme prepare students for careers in the ICT industry which are involved with the analysis, design, maintenance and enhancement of computer-based information systems critical to the successful operation of modern organisations. The IT subject offerings explore a range of current cutting-edge technological issues at the forefront of the information and communication industry today.

Subject code	Subject name	Prerequisite knowledge
Autumn session (February—July)		
ISIT102	Information Systems	None
ISIT105	Communications and Networks	None
ISIT111	Programming Concepts	None
CSCI114	Procedural Programming	None
CSCI224	Human Computer Interaction	None
ISIT204	Principles of e-Business	24cp at 100 level
ISIT301	Professional Practice & Ethics	24cp at 200 level
MATH329	Medical Mathematics and Applications	MATH202
ECTE344	Control Theory	ECTE203
CSCI366	Multimedia Computing	CSCI204
ISIT313	Corporate Responsibility and IT	24cp at 200 level
ISIT416	Organisational Issues in Information Technology	24cp at 300 level
ISIT417	Business Intelligence and Knowledge Management	24cp at 300 level
ISIT430	Introduction to Health Informatics	24cp at 300 level
Spring Session (July—November)		
ISIT100	Systems Analysis	None
ISIT111	Programming Concepts	None
ISIT112	Database	None
ISIT201	Information and Communication Security Issues	24cp at 100 level
MATH204	Complex Variables and Group Theory	MATH201
ECTE203	Signals and Systems	MATH142 or MATH188
CSCI262	System Security	CSCI124
CSCI342	Mobile Applications	CSCI212 and CSCI224
CSCI398	Introduction to Enterprise Computing	CSCI399
ISIT401	Information Systems Strategic Planning	24cp at 300 level
ISIT404	Systems Integration	24cp at 300 level

cp = Credit Points

INTERNATIONAL BUSINESS AND RELATIONS

The International Business and Relations theme includes a range of subject options relevant to the analysis, appreciation and study of the diversity of the global community.

The International Studies offerings, including language, politics and sociology, help prepare students for future careers in international organisations, as part of the public sector or non-government organisations.

The International Business offerings within the Faculty of Business prepare students to respond to the complexities of international business including the impact of divergent cultures and languages and the issues posed by differing markets and government regulations.

INTERNSHIP OPPORTUNITY

Study Abroad and Exchange students can apply to enrol in COMM390 Business Internship (6cp) if they are enrolling in at least one other subject offered by the Faculty of Business. This experiential learning subject, designed for students undertaking a commerce or business degree, provides an opportunity for students to apply their university knowledge in an industry context.

Subject code	Subject name	Prerequisite knowledge
Autumn session (February—July)		
FIN 241	International Financial Management	(ACCY102 or ACCY112 & ECON111) or FIN111
INTS100	Introduction to International Studies	None
ISIT301	Professional Practice & Ethics	24cp at 200 level
ELL210	Communication Across Cultures	None
MARK343	International Marketing	MARK101, MARK213 or MARK293
MGMT102	Business Communications	None
MGMT301	Managing Across Cultures	MGMT110 plus 12cp from 200 or 300 level MGMT or MARK
POL 225	International Relations: Issues, Concepts and Theories	36cp including 6cp POL or INTS
POL 318	The Politics of Asian Development	16cp at 200 level POL
Spring Session (July—November)		
ECON216	International Trade Theory & Policy	ECON111
ECON251	Industry and Trade in East Asia	None
ECON306	The Chinese Economy	72cp including ECON101 and ECON111
ISIT332	Business Process Management	ISIT204 or IACT304
MGMT102	Business Communications	None
MGMT341	International & Comparative Human Resource Management	MGMT110 plus 12cp at 200 or 300 level COMM
INTS 121	Global Politics and Power	None
SOC326	Globalisation and Social Transformation	16cp at 200 level

cp = Credit Points

LANDSCAPE, ENVIRONMENT AND ECOLOGY OF AUSTRALIA

This theme examines the environment and ecology of Australia and is relevant to students with an interest in geography, environmental & earth sciences, conservation, cultural studies or biology.

A distinctive feature of UOW's science programs is the close connection between research and undergraduate teaching. Undergraduate students have access to researchers at the forefront of their fields, with top researchers also lecturing and conducting practical classes.

INTERNSHIP OPPORTUNITY

Science research internship opportunities may be available to approved third year science students. Topics vary from session to session—previous topics have included 'Climate change effect on arid Australia during the past 100,000 years', 'Drought, land degradation, and the beginnings of Central Australian ecological research in the 1960s' and 'How long can we sustain our soil resources?'

smah.uow.edu.au/biol/current-students/internships

Subject code	Subject name	Prerequisite knowledge
Autumn session (February—July)		
BIOL104	Evolution, Biodiversity & Environment	None
BIOL105	Functional Biology of Animals and Plants	None
BIOL240	Biodiversity of Marine and Freshwater Organisms	BIOL103, BIOL104 & BIOL105
BIOL251	Principles of Ecology	BIOL103, BIOL104 & BIOL105
EESC101	Planet Earth	None
EESC103	Landscape Change and Climatology	None
EESC203	Biogeography & Environmental Change	12cp at 100 level EESC
INDS201	Redefining Eden: Indigenous Peoples & the Environment	36cp at 100 level
STS300	The Environmental Context	Any 36cp
Additional subject options for students with a strong background in biology (or other relevant science majors)		
BIOL351	Conservation Biology: Marine & Terrestrial Populations	BIOL251 & STAT252
SCIE292	Science Research Internship	For science majors. Pre-approval required
Spring Session (July—November)		
BIOL103	Molecules, Cells & Organisms	None
BIOL241	Biodiversity of Terrestrial Organisms	BIOL103, BIOL104 & BIOL105
BIOL252	Evolution and Behaviour	BIOL103, BIOL104 & BIOL105
EESC102	Earth, Environment & Resources	None
EESC104	Human Geography: Sustainability, Cities and Cultures	None
EESC202	Soils, Landscapes & Hydrology	12cp at 100 level EESC
EESC208	Environmental Impact of Societies	Any 12cp at 100 level
EESC210	Rural and Regional Geography	EESC104 or 6cp of 100 level SOC
INDS130	Indigenous Knowledges: A Global Perspective	None
SCIE103	Climate Change	None
Additional subject options for students with a strong background in biology (or other relevant science majors)		
EESC308	Environmental & Heritage Management	12cp at 200 level EESC
SCIE292	Science Research Internship	

cp = Credit Points

LAW

These subjects are for students who have an interest in studying different facets of the law. This diverse grouping of subjects is ideal for students who intend to continue into a graduate law degree with an international context.

It may be possible for students who are studying law at their home institution to enrol in LLB subjects if they are deemed to have met the LLB subject pre-requisites. Please note that pre-approval is required. Please refer to the UOW subject database for a list of LLB subjects on offer in 2015.

Subject code	Subject name	Prerequisite knowledge			
Autumn session (February—July)					
IACT201	Professional Practice and Ethics	24cp at 100 level			
LAW 101	Law, Business & Society	None			
LAW 302	Law of Business Organisations	LAW101			
LAW303	Family Law	LAW101			
LAW308	Administrative Law	LAW101			
LAW 316	Occupational Health & Safety Law	LAW101 & 12cp in LAW			
LAW330	Law of Employment	MGMT240 plus either COMM100 or LAW101			
LLB 343	International Law	LAW101			
LLB 354	Human Rights Law	NonePHIL380	Bioethics	Any 36cp	
Spring Session (July—November)					
LAW315	Taxation Law	LAW101			
LAW219	International Business Law	LAW101			
LAW323	Consumer Protection and Product Liability Law	LAW101			
LAW331	Intellectual Property Law	LAW101 LAW332	Labour Regulation	LAW101	
LAW335	Anti-Discrimination Law	LAW101			
LAW352	Advanced Taxation Law	LAW315			
LAW359	Corporate Governance	LAW302			
PHIL151	Argument, Evidence and Knowledge	None			
PHIL106	Media, Art and Censorship	None			
PHIL206	Ethics	Any 36cp			
SOC 244	Punishment: Purpose, Practice, Policy	36cp at 100 level			

cp = Credit Points

MEDIA CULTURE AND COMMUNICATIONS

The Media Culture and Communications theme draws together subjects with a shared interest in the ways in which media and entertainment industries and practices shape our everyday lives.

This theme includes subjects that address the social impact of communication technologies, such as the rise of mobile social networking and how we experience community, and the way computers are changing both the way we work and learn.

These subjects are implicitly international in their outlook, but at the same time they offer a good introduction to the distinctively Australian experience of media culture. If you want to know more about the blend of imported and locally produced media consumed in Australia, or to find out about how Australian journalists, film producers, TV buyers, games designers, or advertising campaigns take advantage of this mix, subjects in this theme will help you find out.

Subject code	Subject name	Prerequisite knowledge
Autumn session (February—July)		
BCM 390	Media, War and Peace	24cp at 200 level
CACW100	Introduction to Creative Writing	None
DIGC335	Cybercultures	16cp at 200 level
ELL210	Communication Across Cultures	None
IACT201	Professional Practice Ethics	24cp at 100 level
JOUR202	Feature Writing	JOUR101 or JOUR201
JOUR205	Professional Writing 1: Writing for Organisations	JOUR101, JOUR201 or JOUR111
STS100	Knowledge, Culture & Social Change: Science, Technology & Society	None
STS286	Risk, Media and Communication	Any 36cp
Spring Session (July—November)		
PHIL106	Media, Art and Censorship	None
DIGC202	Global Networks	36cp at 100 level
HIST291	Film & History	36cp including 6cp HIST or POL, AUST, CCS, ARTS, SMAC, MACS, INTS
ISIT201	Information and Communication Security	24cp at 100 level ISIT, BUSS, CSCI, ECTE
CST120	Culture of Everyday Life	None
CST222	Global Media and Cultural Identity	36cp at 100 level
CST333	Hollywood and Beyond: Genres Across Cultures	16cp at 200 level
PHIL151	Argument, Evidence and Knowledge	None
INTS121	Global Politics and Power	None
POL224	Politics and the Media	36cp including 6cp POL, CCS, MACS, BCM, INTS
SOC104	Investigating Society	None

cp = Credit Points

MEDICAL AND HEALTH SCIENCES

Study abroad is an ideal way for students who are preparing for health-related careers to gain valuable international and cross-cultural perspectives on health policy and medical issues affecting today's global society.

UOW offers a range of subjects which will be of interest to students undertaking a pre-med program. Interested students should discuss their study options with their home advisors well in advance of their proposed studies, as working a study abroad experience into a pre-med/pre-health undergraduate program will require careful planning.

It is possible to undertake some introductory and upper-level courses from a number of faculties at UOW; however, the upper-level programs focusing on health-related studies are normally only open to students with the necessary prerequisites. Introductory courses in anatomy, biology, chemistry and physics are offered and there are also opportunities to study a variety of health-related social issues, such as bioethics, health needs of particular populations, the economics of health care, concepts and issues in healthcare computing.

Subject code	Subject name	Prerequisite knowledge
Autumn session (February—July)		
BIOL104	Evolution, Biodiversity & Environment	None
CHEM101	Introductory Physical & General Chemistry	None. High school chemistry recommended
CHEM211	Inorganic Chemistry II	CHEM101 & CHEM102
CHEM212	Organic Chemistry II	CHEM101 & CHEM102
INDS150	Introduction to Indigenous Australia	None
ISIT430	Introduction to Health Informatics	24cp at 300 level
NMIH101	Effective Communication in Health Care Relationships	None
PHIL206	Practical Ethics	Any 36cp
SCIE102	International Perspectives in Science	None
SHS110	Human Growth, Nutrition and Exercise	None
SHS130	Public Health- Current Issues and their Determinants	None
SHS 210	Histology	BMS101, BMS112, SHS111 or SHS112
STS251	Social Aspects of Genetics & Biotechnology	Any 36cp
Spring Session (July—November)		
BIOL103	Molecules, Cells & Organisms	None
CHEM102	Structures and Reactivity of Molecules for Life	CHEM101
ECON317	Economics of Health and Health Care	None
NANO101	Current Perspectives in Nanotechnology	None
PHIL380	Bioethics	Any 36cp
PHYS155	Introduction to Biomedical Physics	None
SHS 150	Fundamental Concepts in Food Nutrition	None
SHS 212	Introduction to Pathophysiology	BMS202 or SHS211

cp = Credit Points

PSYCHOLOGY

The Psychology theme highlights introductory and advanced subjects from the UOW Psychology major, accredited by the Australian Psychological Accreditation Council.

This theme provides an opportunity for students with appropriate background knowledge to combine subjects in psychology with their studies in a variety of fields including: business and management, health sciences, humanities, social sciences and engineering. The School of Psychology is a research-intensive academic unit within the Faculty of Social Sciences. The School's teaching and research laboratories are equipped with the latest technology and supported by a team of professional technical staff.

Subject code	Subject name	Prerequisite knowledge
Autumn session (February—July)		
PSYC101	Introduction to Behavioural Science	None
PSYC121	Foundations of Psychology A	None
PSYC234	Biological Psychology & Learning	12cp of introductory Psychology plus equiv. to PSYC123
PSYC250	Quantitative Methods	12cp of introductory Psychology
PSYC251	Psychology of Abnormality	PSYC121, PSYC122 and PSYC123
PSYC345	Advanced Cognition	24cp at 200 level including equiv. of PSYC236 and PSYC250
PSYC347	Assessment & Intervention	24cp of 200 level PSYCH
PSYC348	History & Metatheory of Psychology	24cp at 200 level PSYCH
PSYC350	Social Behaviour and Individual Differences	24cp of 200 level PSYCH and equiv. of PSYC250
PSYC355	Forensic Psychology	36cp of 200 level PSYCH
Spring Session (July—November)		
PSYC122	Foundations of Psychology B	None
PSYC123	Theory Design and Statistics in Psychology	None
PSYC231	Personality	At least 12cp of introductory Psychology
PSYC236	Cognition and Perception	12cp of introductory PSYC plus equiv. to PSYC123
PSYC241	Developmental & Social Psychology	At least 12cp of introductory Psychology
PSYC349	Visual Perception	24cp at 200 level PSYCH which includes equiv. of PSYC236 and PSYC250
PSYC352	Psychophysiology	24cp at 200 level PSYCH which includes equiv. of PSYC234 and PSYC250
PSYC355	Forensic Psychology	36cp of 200 level PSYCH

cp = Credit Points

PUBLIC HEALTH AND INDIGENOUS HEALTH

Public Health courses at UOW provide study options for students interested in a career that enhances the health of the community.

Our courses provide students with skills to obtain, review and analyse health information, and to plan and manage health projects and programs that improve the health of populations.

Subject code	Subject name	Prerequisite knowledge
Autumn session (February—July)		
EESC205	Population Geography	12cp 100 level EESC
INDS150	Introduction to Indigenous Australia	None
INDS200	Identity, History & Resilience	INDS130, ABST150 or INDS150 plus 30cp at 100 level
ISIT430	Introduction to Health Informatics	24cp at 300 level
NMIH101	Effective Communication in Health Care Relationships	None
PSYC101	Introduction to Behavioural Science	None
SHS110	Human Growth, Nutrition & Exercise	None
SHS130	Public Health - Current Issues and their Determinants	None
SHS230	Contemporary Public Health Issues	Any 24cp
SHS231	Health Promotion	24cp at 100 level including SHS130 or SHS110
SHS334	Research Skills in Public Health	Pre-approval required
Spring Session (July—November)		
ECON317	Economics of Health and Human Resources	None
EESC104	Human Geography: Sustainability, Cities and Cultures	None
NMIH108	Introduction to Health Behaviour Change	NMIH102
NMIH205	Cultural Competence in Health Care Practice	NMIH101
SHS150	Fundamental Concepts in Food and Nutrition	None

cp = Credit Points

SOCIAL INNOVATION AND ENTREPRENEURSHIP

Courses taught in the Faculty of Business are underpinned by its mission to inspire socially innovative commerce through an understanding of genuine corporate social responsibility, environmental sustainability, personal and business ethics and human rights.

UOW has become a signatory to the Principles for Responsible Management Education (PRME), and is part of a select global network of universities that has embraced the six principles. These principles formally develop responsible business education practices, holding organisations accountable for their actions and outlining strict targets that must be met to retain credibility.

INTERNSHIP OPPORTUNITY

Study Abroad and Exchange students can apply to enrol in COMM390 Business Internship (6cp) if they are enrolling in at least one other subject offered by the Faculty of Business. This experiential learning subject, designed for students undertaking a commerce or business major, provides an opportunity for students to apply their university knowledge in an industry context.

Subject code	Subject name	Prerequisite knowledge
Autumn session (February—July)		
COMM101	Principles of Responsible Commerce	None
COMM390	Commerce Internship	96cp including all COMM core subjects
ECON309	Environmental & Natural Resource Economics	ECON111
ISIT204	Principles of e-Business	24cp at 100 level ISIT, BUSS, CSCI
MGMT351	Responsible Leadership	MGMT110 and MGMT201
MARK333	Marketing Communications & Advertising	MARK101, MARK213 or MARK293
Spring Session (July—November)		
COMM101	Principles of Responsible Commerce	None
COMM390	Commerce Internship	96cp including all COMM core subjects
ISIT208	Strategic Systems Management	24cp at 100 level ISIT, BUSS, CSCI
MARK320	Social Marketing	MARK101 or MARK213
MGMT311	Management of Change	MGMT110

cp = Credit Points

SUSTAINABILITY STUDIES

The Sustainability Studies theme includes new technologies, environmental conservation, green energy, climate change and philosophy.

INTERNSHIP OPPORTUNITY

Science research internship opportunities may be available to approved third year science students. Topics vary from session to session—previous topics have included 'Climate change effect on arid Australia during the past 100,000 years', 'Drought, land degradation, and the beginnings of Central Australian ecological research in the 1960s' and 'How long can we sustain our soil resources?' smah.uow.edu.au/biol/current-students/internships

Subject code	Subject name	Prerequisite knowledge
Autumn session (February—July)		
BIOL104	Evolution, Biodiversity and the Environment	None
BIOL105	Functional Biology of Plants and Animals	None
EESC103	Landscape Change and Climatology	None
ENVE385	Environmental Engineering	None
INDS201	Redefining Eden	36cp
LAW101	Law, Business and Society	None
PHIL256	Ethics and Environment	At least 36cp
STS100	Knowledge, Culture & Social Change: Science, Technology & Society	None
Additional subject options for students with a strong background in Engineering		
ENVE311	Pollution Control & Cleaner Production	None
ENVE377	Membrane Science & Technology	ENVE220
Spring Session (July—November)		
EESC102	Earth Environment and Resources	None
EESC104	Human Geography: Sustainability, Cities and Cultures	None
EESC208	Environmental Impact of Societies	12cp at 100 level
EESC302	Coastal Environments	12cp of 200 level EESC
ENVE320	Environmental Engineering Design for Sustainability	ENVE220 or equiv.
LAW334	Environmental Law	LAW101
PHIL206	Practical Ethics	Any 36cp
SCIE103	Climate Change	None
Additional subject options for students with a strong background in Engineering		
ENVE220	Water Quality and Ecological Engineering	ENGG252
ENVE221	Air & Noise Pollution Control Engineering	None
ENVE410	Site Remediation Engineering	None
ENVE421	Integrated Environmental Engineering Data	ENVE320 & CIVL322
ENGG378	Sustainable Energy Technologies	ENGG252, MECH440 or MECH340

cp = Credit Points

CHOOSING YOUR PROGRAM

Study Abroad and Exchange programs are designed for international undergraduate or postgraduate students who wish to spend one or two semesters in a program of study at the University of Wollongong and transfer the credits to their home institution. For application procedure information see page 38.

STUDY ABROAD PROGRAM

The Study Abroad program is designed to welcome students to UOW from both formally recognised study abroad partners and non-affiliated institutions. Study Abroad students pay tuition fees directly to UOW for their program of study at UOW.

INTERNATIONAL EXCHANGE PROGRAM

The University of Wollongong has established formal exchange agreements with a number of leading universities in North America, Mexico, Europe, Scandinavia, South America and Asia.

This program allows a limited number of students to enrol each session. In this program, students are not required to pay tuition fees to UOW.

Contact your home university for more information about coming to Wollongong as an exchange student for one or two semesters.

VISITING RESEARCH PROGRAM

The Visiting Research Program is designed for both undergraduate and postgraduate students who are currently enrolled full-time at an overseas university and wish to obtain research experience with a UOW research team. This program is usually between three and six months in duration and must be a formal requirement for the degree at the student's home university.

Securing a UOW academic supervisor is the responsibility of the applicant. Participants must contact the relevant UOW Academic Unit or Research Unit and negotiate with a member of staff to supervise their project. Applications cannot be accepted until a UOW supervisor has been confirmed. Participants are not eligible to receive a UOW academic transcript. Proof of the research conducted at UOW will be evident in the research results and written references from project supervisors.

Participants will be required to enter Australia with a student visa. Information about this visa and the application process can be obtained by going to: www.immi.gov.au

Further information may be obtained from uow.edu.au/future/studyabroad

INTERNSHIPS

At UOW you can combine your study abroad experience with a unique internship opportunity.

BUSINESS INTERNSHIP PROGRAM

The experiential learning subject, COMM390 Business Internship is designed for students undertaking business majors, and provides an opportunity for students to integrate and apply their university knowledge in an industry context. Students accepted into the Business Internship Program are required to enrol in at least 1 other subject from the Faculty of Business along with COMM390, and 1 or 2 other UOW subjects to make up a full-time study load.

An additional placement fee is required for students accepted into this program. Please check with the UOW Office of Global Student Mobility at the time of application. Further information on the COMM390 Business Internship Program can be found at business.uow.edu.au/UOW047505

SCIENCE RESEARCH INTERNSHIP

Students undertaking science majors can apply to enrol in the Science Research Internship program UOW. The program gives students the opportunity to gain experience in the laboratory or in the field working alongside active UOW researchers. Students must enrol in either SCIE292 or SCIE392 along with up to 3 other UOW subjects to make up a full-time study load.

Further information on the Science Research Internship program can be found at smah.uow.edu.au/biol/current-students/internships

CHOOSING YOUR SUBJECTS

Subjects are taught as a mix of lectures, tutorials or seminars, laboratory work where appropriate, and individual study. Study Abroad and Exchange students are assessed in the same way as Australian students.

Our Study Themes represent the study areas that are of particular interest to our Study Abroad and Exchange students. Current Study Themes can be found starting on page 29. The themes are designed to help students choose subjects from the area that interests them. Students may choose subjects from a range of different themes, or if there is not a study theme that covers your area of interest you can simply pick your own combination of subjects.

PLANNING A PROGRAM OF STUDY

Study Abroad and Exchange students enrol for one or two sessions as a non-award student at UOW.

UOW sessions (semesters) commence in Autumn and Spring (March and July). If you are studying a postgraduate program at our SBS Sydney or Wollongong Campus—your sessions are trimesters and start in January, May and August.

After receiving your offer letter from UOW, you are required to submit a UOW Study Plan. Your proposed subjects will then be assessed based on your academic background prior to your arrival.

Every effort will be made to obtain approval of your selected subjects, however this is not guaranteed. You'll need to be flexible with your subject selection, and be prepared with additional subjects choices. Academic advice on your study program is available from UOW staff during orientation week. We advise that you bring a current transcript of your academic record from your home university or college, as well as subject outlines and descriptions. It's your responsibility to ensure that the proposed program will earn the credits needed to satisfy the degree requirements of your home university or college.

LIST OF SUBJECTS

The subject information in this book should be used as a guide only. For further information on subjects please go to uow.edu.au/handbook and select 'Subject Descriptions' from the menu.

Undergraduate students choose subject codes between 100-400 (eg 1st – 4th year subjects). Postgraduate students choose subject codes between 800-900. You can only study postgraduate subjects if you've completed a Bachelor degree.

IMPORTANT

When looking at subjects, take note of when the subject is available. Some subjects are only offered in either Autumn or Spring session. To check these, look under Study Themes pp19-34. Also, check for prerequisites as some subjects require that you have taken an equivalent subject or number of credits from your home university.

ASSESSMENT

The assessment details for each subject are available under "Subject Information" in the online student calendar. Go to uow.edu.au/handbook and select Subject Descriptions. A comprehensive syllabus outlining assessment and other expectations is provided to students in the first lecture of each subject.

THE GRADING SYSTEM:

High Distinction (HD): 85–100%

Credit (C): 65–74%

Fail (F): 0–49%

Distinction (D): 75–84%

Pass (P): 50–64%

Technical Fail (TF): 0%

The transfer of grades to your home university varies for each college or institution.

WORKLOAD

Generally, Study Abroad students enrol in three or four subjects per session (two in summer session). To give yourself some flexibility with timetabling during enrolment, you should obtain approval in advance for five or six subjects per session. In determining your individual program, you should note that:

- subjects are offered on a credit point basis
- normal full-time course load is 48 credit points over two sessions, or 24 credit points for one session (in either Autumn or Spring session), or 12 credit points in Summer session.

One credit point has an implied workload of two hours per week. Six credit points represents a minimum of 12 hours of work: this may be 3 hours of lectures, 4 hours of reading and 5 hours of personal study or essay writing. Many full-time students will spend fewer than 15 hours a week in contact with lecturers or tutors but will be expected to prepare for these classes with reading and tutorial preparation. Australian universities require students to be self-directed in their study and to submit a considerable amount of written work in assignments and seminar or tutorial papers.

TRANSCRIPTS

Transcripts of your UOW subject results are issued by the University at the end of each session, and provide details of the subjects completed and final mark and grade awarded. Official transcripts are sent to your home university or program provider for credit transfer.

SBS PROGRAM DELIVERY

Subjects offered by UOW's Sydney Business School at the Wollongong and Sydney campuses are delivered on a trimester system. Trimesters begin in January, May, and August. Students enrol in 3–4 subjects (18–24 credit points) per trimester.

Note: Students must decide which SBS campus they wish to study at, and only select subjects from that campus. Students cannot select subjects at multiple campuses.

ADMISSION REQUIREMENTS

STUDY ABROAD & INTERNATIONAL EXCHANGE PROGRAM

Academic requirements

- Completion of at least one year of study at a university or other recognised tertiary institution
- A cumulative grade point average (GPA) of 3.0 or higher on a 4.0 scale

English language requirement

IELTS

- Academic overall 6.0, and 6.0 in reading and writing.

TOEFL

- 550 paper
- 213 computer
- 4.0 TWE/Essay Rating
- 79 internet-based with not less than 20 in writing, 18 in reading, 17 in listening and 16 in speaking.

Applicants who have studied in a country where English is the medium of instruction may be exempted—this includes studies in English-speaking countries, as well as completion of schooling in Malaysia, Hong Kong and Singapore, and examination results in high school English subjects in some European and Scandinavian countries.

Indicative program dates*

Start

Semester 1 dates

Late February

Finish

Mid – End June

(end of university examinations)

Semester 2 dates

End July

Mid November

(end of university examinations)

Number of university subjects

3 or 4 per semester

Indicative tuition fees (2015 fees)*

Tuition A\$9,750

Overseas Student Health Cover \$353 (per semester)#

Student Services and Amenities Fee A\$143 (per semester)**

Additional full-time English language course (if required to reach entry) – \$425 per week

* All programs except those taken within the Sydney Business School. #Not applicable to Norwegian, Swedish or Belgian students ** Not applicable to exchange students

+ Fees subject to change

ENGLISH LANGUAGE PROGRAMS

ENGLISH FOR ENTRY TO UOW

Students who do not meet the direct entry requirements for Study Abroad and Exchange may choose to enrol in a period of intensive English to prepare you for entry to a semester program through UOW College (located on the University campus).

Duration 12 or 18 weeks with the option of adding additional weeks of English.

Intake Three times per year. English classes commence every 6 weeks.

ENGLISH PLUS UNI

Offered through UOW College, English Plus Uni is for students who do not have English as their first language, and have not met the required level of English to undertake a formal semester program.

During enrolment at UOW College, students will audit 1 or 2 university subjects and at the same time take part-time English language classes.

Students study English for 14 hours per week and will also attend their chosen university subject(s) for 3–6 hours per week.

Students receive a transcript from UOW College for their studies. Home universities may choose to offer credit for this program.

STUDY TOURS FOR CREDIT

UOW College offers customised study tour programs for groups of students. Study tours can be held at any time of the year, and consist of English language training and/or academic components and/or leisure and social research activities. For all or some of the study tour components, the home university may choose to grant credit towards studies at the home university.

APPLY NOW:

A STEP BY STEP GUIDE

1

SUBMIT YOUR COMPLETED UOW APPLICATION

Ensure that your application includes:

- An original copy of your academic transcript &
- An original copy of your English language results if applicable

2

APPLY FOR ACCOMMODATION

If you wish to live in a UOW residence then you **MUST** apply to UOW Living by:

- October 31 for Autumn (February)
- May 1 for Spring (July)

You should apply for accommodation by the above dates to guarantee your accommodation placement.

apply-accom.uow.edu.au

3

SUBMIT YOUR STUDY PLAN

Study Plans should be submitted by the below dates:

- November 30 for Autumn (February)
- May 1 for in Spring (July)

Study Plans are submitted at **uow.edu.au/future/studyabroad/yourprogram**

4

RETURNING YOUR OFFER ACCEPTANCE (ATTACHMENT A)

Return the formal acceptance of the offer (Attachment 'A' of your Offer Letter) with payment as outlined in your offer acceptance (tuition, OSHC and SSAF)

5

CONFIRMATION OF ENROLMENT & VISA

The UOW Office of Global Student Mobility will email you an electronic confirmation of enrolment (eCOE) once you have accepted your offer and your payment has been processed. You will use this eCOE when applying for your Australian student visa (visa subclass 575 Non Award).

6

APPLY FOR AIRPORT PICK-UP

Request your complimentary airport pick-up at

accommodation.uow.edu.au/about/accommodation/airport

7

ENROL ONLINE

You will be advised by email of your subject approvals from your Study Plan and provided with instructions on how to enrol online. You will also get your UOW email address.

8

ARRIVE AT UOW!



GLOBAL PARTNERS

AUSTRIA

Karl-Franzens-Universität, Graz

BELGIUM

Universiteit Antwerpen

BRAZIL

Universidade Federal do Rio Grande do Sul (UFRGS)

Pontifícia Universidade Católica do Rio de Janeiro (PUC)

CANADA

Concordia University

McMaster University, Canada

University of Alberta

University of British Columbia

University of Calgary

University of Manitoba

Université de Montréal

University of Toronto

University of Victoria

University of Waterloo

CHINA (P.R.C.)

Central China Normal University

Chinese University of Petroleum, Huadong

Ningbo Institute of Technology, Zhejiang University

Shanghai International Studies University

Shanghai University of International Business and Economics

Wuhan University

COLOMBIA

University Externado of Colombia

CZECH REPUBLIC

Masarykova Univerzita, Brno

DENMARK

Aarhus Universitet

University of Copenhagen

ESTONIA

Tartu Ülikool

FINLAND

Itä-Suomen Yliopisto

Helsingin Yliopisto, Helsinki

FRANCE

Ecole Catholique d'Arts et Métiers (ECAM)

Ecole Internationale des Sciences du Traitement de L'Information (EISTI)

Ecole Speciale de Mechanique et D'Electricite ESME Sudria

IESEG School of Management – Université

Catholique de Lille

INSA Lyon

Université de Pau

Université des Sciences et Technologies de Lille

Université d'Orléans

Université François-Rabelais de Tours

Université de Strasbourg

Université Montpellier 2 Sciences et Techniques Supélec

GERMANY

Friedrich-Alexander Universität, Erlangen-Nürnberg

Leibniz Universität Hannover

Ruhr-Universität Bochum

Technische Universität, München

Universität Leipzig

University of Applied Sciences, Kiel

WHU – Otto Beisheim School of Management

GREECE

Aristotéleio Panepistimio Thessalonikis

HONG KONG

City University of Hong Kong

Hong Kong Baptist University

The Hong Kong Polytechnic University

HUNGARY

Eötvös Loránd Tudományegyetem (ELTE)

ICELAND

University of Iceland (Háskóli Islands Reykjavík)

INDIA

Pandit Deendayal Petroleum University

IRELAND

Dublin City University

University College Cork

University of Limerick

ITALY

Politecnico di Milano

University of Cagliari

Università degli Studi di Bologna

Università degli Studi di Ferrara

Università per Stranieri di Siena

JAPAN

Dokkyo University

Doshisha University

Doshisha Women's College of Liberal Arts

Gunma University

Hiroshima-Shudo University

J.F. Oberlin University

Kobe University

Meio University

Oita University

Otaru University of Commerce

Senshu University

Sophia University

University of Electro-Communications

LATVIA

Latvijas Universitate, Riga

LIECHTENSTEIN

University of Liechtenstein

LITHUANIA

Vilniaus Universitetas

MALAYSIA

Universiti Sains Malaysia

MALTA

Università ta' Malta

MEXICO

Tec de Monterrey

Universidad Iberoamericana

NETHERLANDS

Arnhem Business School

Maastricht University

Hogeschool voor de Kunsten Utrecht

Universiteit Utrecht

NEW CALEDONIA

Université de la Nouvelle-Calédonie



NORWAY

Buskerud University College
Diakonhjemmet University
Gjøvik University
Høgskolen i Lillehammer
Norges Teknisk-Naturvitenskapelige Universitet (NTNU)
Sor-Trondelag University College
Stord/Haugesund University College
Universitet i Bergen
Universitetet i Oslo
University of Stavanger

POLAND

Uniwersytet Jagiellonski Kraków

PORTUGAL

Universidade de Coimbra
Instituto Superior Technico de Lisboa
Universidade da Madeira

ROMANIA

Universitatea 'Alexandru Ioan Cuza', Iasi

SINGAPORE

Nanyang Technological University

SLOVAKIA

Univerzita Komenského v Bratislave

SLOVENIA

Univerza v Ljubljani

SOUTH KOREA

Ajou University
Chung-Ang University
Chung-buk National University
Daejin University
Dongguk University
Keimyung University
Seoul National University
Sogang University
Sungkyunkwan University
Woosuk University

SPAIN

Universidad Complutense de Madrid
Universidad de Deusto

Universidad de León
Universidad de Oviedo
Universidad Politecnica de Madrid
Universitat de Valencia

Sweden

Blekinge Institute of Technology
Karlstads Universitet
KTH Royal Institute of Technology
Sveriges Största Tekniska Universitet
Umeå Universitet
Högskolan i Gävle
Uppsala Universitet
Vaxjö Universitet

Switzerland

Universität Basel
Universität Luzern
Universität St. Gallen

TAIWAN

Soochow University

THAILAND

Assumption University
Chulalongkorn University
Prince of Songkla University
Thammasat University

TURKEY

Bogaziçi University
Koç Üniversitesi

USA

Arcadia University
Beloit College
Boise State University
California State University, Long Beach
Clemson University
Colgate University
Colorado School of Mines
Emory University
Goucher College
Hanover College
Indiana University, Bloomington
Indiana University of Pennsylvania
Kalamazoo College
Kansas State University

Keene State College
Lebanon Valley College
Michigan State University
Molloy College
Montana State University
North Carolina State University
Northern Arizona University
Occidental College
Pacific University
Smith College
Springfield College
State University of New York, Plattsburgh
University of Arizona
University of North Carolina at Chapel Hill
University of California Education Abroad Program
University of Colorado, Boulder
University of Connecticut
University of Denver
University of Hartford
University of Illinois, Urbana-Champaign
University of Kansas, Lawrence
University of Massachusetts, Amherst
University of Miami
University of Nebraska, Lincoln
University of North Carolina Exchange Program (UNCEP)
University of North Carolina, Wilmington
University of Oklahoma
University of Scranton
University of Texas at Dallas
Villanova University
Western Michigan University
Wheaton College

UK

Cardiff University
Lancaster University
Queen's University of Belfast
University of East Anglia
University of Exeter
University of Hull
University of Leeds
University of Sheffield

IMPORTANT DATES

WOLLONGONG CAMPUS

SPRING SESSION–2015 (JULY–NOV)

Enrolment/Orientation	21 July
Lectures Commence	27 July
End of Session	19 November

SUMMER SESSION–2015/2016 (NOVEMBER–FEBRUARY)

Lectures Commence	30 November
End of Session	12 February

AUTUMN SESSION–2016 (FEBRUARY–JULY)

Enrolment/Orientation	23 February
Lectures Commence	29 February
End of Session	23 June

SPRING SESSION–2016 (JULY–NOV)

Enrolment/Orientation	19 July
Lectures Commence	25 July
End of Session	17 November

SYDNEY BUSINESS SCHOOL – SYDNEY AND WOLLONGONG INNOVATION CAMPUS

TRIMESTER 1–2015 (FEBRUARY–MAY)

Enrolment/Orientation	29–30 January
Lectures Commence	2 February
End of Session	2 May

TRIMESTER 2–2015 (MAY–AUGUST)

Enrolment/Orientation	7–8 May
Lectures Commence	11 May
End of Session	8 August

TRIMESTER 3–2015 (AUGUST–NOVEMBER)

Enrolment/Orientation	13–14 August
Lectures Commence	17 August
End of Session	14 November

For 2016 Sydney Business School trimester dates, please visit the following link:

business.uow.edu.au/sydney-bschool/businesscentral/resources/UOW051442

ACCOMMODATION APPLICATIONS

Applications for university residences must be made online at **apply-accom.uow.edu.au**

In order to guarantee a place in the residences, application must be submitted by:

- **OCTOBER 31** for studies commencing in February
- **MAY 1** for studies commencing in July

ACADEMIC ENGLISH COURSE DATES

For students that require English prior to the start of the of their study abroad and exchange period.

ENGLISH FOR TERTIARY STUDIES

FOR ENTRY TO UOW SESSION	LENGTH OF STUDY REQUIRED	START DATE
Autumn 2016	18 weeks	28 September 2015
	12 weeks	9 November 2015
	6 weeks	4 January 2016
Spring 2016	18 weeks	22 February 2016
	12 weeks	4 April 2016
	6 weeks	16 May 2016

YOUR
UOW
EXPERIENCE
AWAITS



LEARN MORE

uow.edu.au/future/studyabroad

Call +61 2 4221 3170

facebook.com/uowstudyabroad

student-mobility@uow.edu.au

[#ThisIsUOW](#)

**UNIVERSITY OF
WOLLONGONG**
AUSTRALIA

